



OXFORD™ PREMIUM
Design by Arne Jacobsen, 1962

REPUBLIC OF **Fritz Hansen**®
EST. 1872

OXFORD™

DESIGN BY ARNE JACOBSEN, 1962

The Oxford™ Premium is available in several varieties. The shell is made of laminated veneer covered with three layers of PU foam and upholstered with fabric/leather. The armrests and bases (5-star) are moulded aluminium.

Configurations:

All chairs are available in low and medium high back; double castors with aluminium/black caps or black-grey synthetic toes; with fixed seat height or height adjustment incl. tilt mechanism.

Upholstery

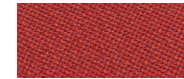
Oxford™ Premium is presented in a selection of colours in the fabric Rime as well as two selected colours from the leather type Soft that accentuate the design of the chair.

The chairs are also available upholstered in the fabrics: Fame, Fame Hybrid, Hallingdal, Steelcut, Steelcut Trio, Divina, Divina MD, Divina Melange, Tonus and Tonus Meadow, as well as in the leather types: Basic, Soft (all colours), Natural, Rustic, Elegance and Sense.

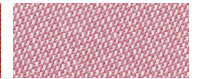


THE FRITZ HANSEN SELECTIONS ARE:

RIME FABRIC



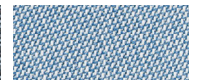
BRIGHT RED/DARK RED



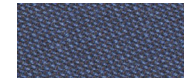
BRIGHT RED/WHITE



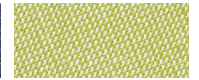
BLACK/GREY



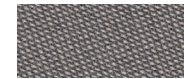
BLUE/WHITE



BRIGHT BLUE/BROWN



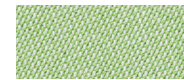
LIME GREEN/WHITE



DARK GREY/BEIGE

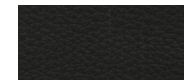


BROWN/DARK BLUE

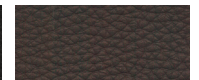


GREEN/WHITE

SOFT LEATHER



BLACK



DARK BROWN